



**JBL**

Home Cinema Catalogue 2003-2004

PRO SOUND COMES HOME™

# The Road to Authentic Hollywood Sound Starts Here



# JBL

## Professional Cinema Sound Since 1928

**JBL established its reputation in the Twenties with our founder's design for the first cinema sound system.**

Only the best was good enough for the Warners Theater in 1928 – and the same holds true for every JBL customer world-wide more than 75 years later.

1928, JBL was born out of a prestigious world first when a young electrical engineer, James Bullough Lansing, was given the task of designing a cinema sound system for the Warners Theater in Hollywood so that movie-goers could enjoy the world's first talking picture, *The Jazz Singer*, starring Al Jolson. One year later, inspired by this experience, Lansing formed his own Lansing Manufacturing Company.

Today, JBL continues to innovate and maintain its uncontested leadership position as the premier manufacturer of loudspeakers for domestic, automotive and professional applications. Even after more than half a century, professional users, music lovers and home theater enthusiasts still choose JBL for the best in sound reproduction – both at work and at play.

**1946**

Lansing establishes James B. Lansing Sound Inc., which was later shortened to JBL, to pioneer high fidelity audio in the home. For the first time, the technologies and craftsmanship so appreciated by professional sound engineers are applied to the design of domestic entertainment systems.

**1955**

JBL introduces the legendary Hartsfield loudspeaker system. Known as "the ultimate dream speaker", the Hartsfield sets a new standard for the quality of music reproduction in the home.

**1958**

JBL launches the amazing Paragon loudspeaker system. This radically different single massive stereophonic cabinet remains to this day a true legend in the world of hi-fi.

**1964**

Discovering that large numbers of its professional studio monitors are finding their way into home music systems, JBL adapts the pro technology and re-designs their appearance to suit the domestic environment.

**1969**

JBL applies technology from its popular professional studio monitors in the design of the L-100, bringing the performance of JBL recording studio systems to the home. During the 1970's, over a quarter of a million JBL L-100 loudspeakers were produced and sold.

**1976**

JBL professional studio monitors are the number one loudspeakers in recording studios all over the world. Today, JBL monitors are used in more than 70% of the world's recording studios. This means that most of the music that you listen to was recorded using JBL loudspeakers.

**1983**

George Lucas selects JBL to design the world's first THX®-approved professional loudspeaker system for movie theaters. Today, more than 50% of the world's THX-approved cinemas use JBL loudspeakers. What's more, you can hear the sound of JBL in over 75% of the cinemas built during the last 20 years.

**1984**

JBL introduces its revolutionary titanium dome tweeter technology for home loudspeakers. Lighter than paper, yet stronger than steel, titanium responds quickly and accurately to the music signal providing the finest in high-frequency performance.

**1993**

JBL introduces the THX-approved Synthesis® home theater systems, offering for the first time a comprehensive system solution including everything from loudspeakers to equalization, surround sound processing and amplification.

**1996**

JBL proudly celebrates its 50th anniversary. The company continues its unique tradition of applying professional skills and craftsmanship to loudspeakers and electronics for the home and away from home.

**1997**

JBL is the first to introduce a complete Dolby® Pro Logic home theater system, ESC 300, combining an active subwoofer with surround sound processor and compact front, center and surround loudspeakers. This product formed the basis for JBL's powerful range of Simply Cinema™ products offering plug and play convenience.

**1998**

JBL introduces the TiK Series, which establishes a new paradigm of excellence for groundbreaking acoustic engineering, engaging musical realism, and innovative 'sculptural' design. Using processes developed by Scandinavian furniture makers, the sumptuous TiK cabinet design gives enhanced sonic performance while providing a feast for the eyes.

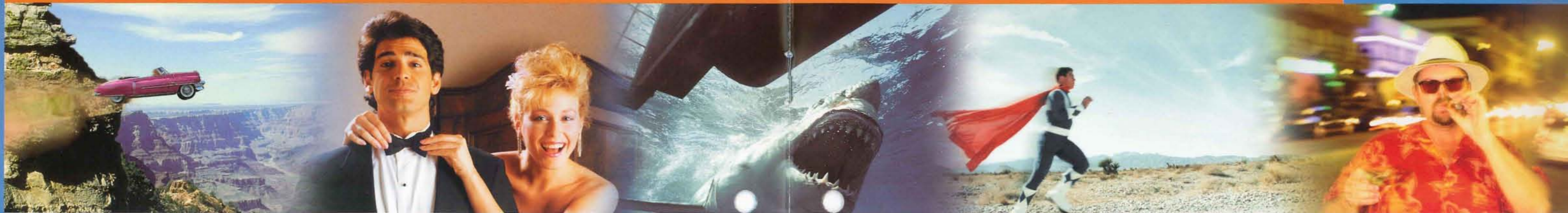
**2003**

JBL introduces the world's first 6.1 channel Simply Cinema Systems to fully benefit from 6.1 digital surround sound formats.

PRO SOUND COMES HOME™

Simply Cinema

# Legendary Movie Sound, a Continuous Evolution



## DSC 1000

The JBL DSC system draws on our long experience of providing surround sound systems for the professional and home user. All in one simple to use and elegant package.

We designed the DSC system by applying our strict professional standards for sound quality and reliability. Combining DVD-Audio/Video player, discrete digital surround processing, RDS radio, power amplifier channels, 5 satellite loudspeakers and subwoofer, JBL DSC is an exceptional compact, high-performance system.

The JBL DSC approach re-defines elegant styling, performance and ease of use.

### DSC 1000

To make home cinema even easier to enjoy, the new JBL DSC 1000 system includes everything you need to make it the heart of your home entertainment system. JBL is recognized worldwide as the expert in home cinema loudspeaker systems. The DSC 1000 system combines JBL loudspeaker know-how with an elegantly styled and simple to use Source, housing DVD Player, RDS Tuner and surround controller featuring DTS®, Dolby® Digital and Dolby Pro Logic II surround sound processing.

For the ultimate playback the DVD player handles both DVD-Audio and DVD-Video, in addition to MP3, WMA and JPEG files. A progressive scan video output allows state-of-the-art picture quality.

The speaker package features four satellite speakers, a voice-matched center speaker and newly designed active subwoofer with a powerful, integrated 100 W amplifier. Satellites and center speakers are driven by a 5 x 50 W digital amplifier.

All you have to do is provide the TV and the DVD disc to enjoy your favorite movie release in style.

PRO SOUND COMES HOME™

Simply Cinema™

# Sound so Pure, You'll Forget Where You Are



SCS 146

## SCS and ESC

Most of the movies and music you love were created using JBL equipment.  
Most of the concerts and cinemas you attend use JBL equipment.

Now, JBL Simply Cinema Systems let you bring it all back home as we bring the world's first true 6.1 surround sound systems. Attractive design, compact size, straightforward installation and high performance; we even include complete wiring and wall brackets for your convenience.

That's why it makes sense to bring the JBL experience home.  
And that's why the professionals at JBL designed the ESC and SCS solutions for your listening and viewing pleasure.



FS 300, Optional tower stand for use with the satellites of DSC 1000, SCS 140, SCS 146 and ESC 360.

### SCS 140 and SCS 146

The 6.1 SCS 146 features five elegant compact satellite speakers and a matching center. All speakers are video-shielded allowing positioning close to a TV monitor. These are combined with an active subwoofer featuring a powerful 100 W amplifier. SCS 140 is a traditional 5.1 version with four satellite speakers.

Simply combine with an AV receiver and DVD player to enjoy the latest Hollywood movie in stunning 6.1 or 5.1 surround sound. The long-throw 8" drive unit in the subwoofer will give you the bass impact you need to make the most of your movie sound.



SCS 140



SCS 188

### SCS 178 and SCS 188

The 6.1 JBL SCS 188 and 5.1 JBL SCS 178 loudspeaker systems combine stylish design with an elegant wood look to give a traditional touch to your home cinema system. Both include all the necessary loudspeaker cables for easy connection to an AV receiver. The satellites and voice-matched center are all video-shielded and partnered with an active subwoofer for smooth, natural sound with powerful bass.

### ESC 360

The ESC 360 system is the latest generation of the home cinema system concept pioneered by JBL in 1997. This complete 185 W home cinema system features a powerful subwoofer with integrated DTS, Dolby Digital and Dolby Pro Logic surround sound processing and all the necessary channels of amplification. Added to this smart subwoofer are four ultra-compact satellite speakers, a voice-matched center channel speaker, all video-shielded, loudspeaker and interconnect cables, remote control and wall brackets. In short: Just add TV!



PRO SOUND COMES HOME™

SATELLITE	DSC 1000	ESC 360	SCS 140 / SCS 146	SCS 178 / SCS188
Frequency Response (-6dB)	120 Hz-20 kHz	120 Hz-20 kHz	120 Hz-20 kHz	90 Hz-22 kHz
Sensitivity (2.83V/1m)	86 dB	84 dB	86 dB	86 dB
Nominal Impedance	4 Ohms	4 Ohms	4 Ohms	4 Ohms
Recommended Amplifier Power	System	System	10 - 50 Watts RMS	25 - 100 Watts RMS
Titanium Laminate HF	12 mm	12 mm	12 mm	12 mm
Paper Cone Midrange	75 mm	75 mm	75 mm	100 mm
Dimensions (h x w x d)	111 x 81 x 95 mm	111 x 81 x 92 mm	111 x 81 x 95 mm	235 x 140 x 179 mm
Weight	0.5 kg	0.5 kg	0.5 Kg	2.8 kg
Available Colors	silvergray	silvergray	silvergray	beech/cherry - SCS 188 in cherry

CENTER				
Frequency Response (-6dB)	120 Hz-20 kHz	120 Hz-20 kHz	120 Hz-20 kHz	100 Hz-22 kHz
Sensitivity (2.83V/1m)	88 dB	86 dB	88 dB	88 dB
Nominal Impedance	4 Ohms	4 Ohms	4 Ohms	4 Ohms
Recommended Amplifier Power	System	System	10 - 50 Watts RMS	25 - 100 Watts RMS
Titanium Laminate HF	12 mm	12 mm	12 mm	12 mm
Paper Cone Midrange	dual 75 mm	dual 75 mm	dual 75 mm	dual 100 mm
Dimensions (h x w x d)	83 x 194 x 95 mm	83 x 194 x 95 mm	83 x 194 x 95 mm	145 x 402 x 155 mm
Weight	0.85 kg	0.8 kg	0.85 Kg	4.5 kg
Available Colors	silvergray	silvergray	silvergray	beech/cherry - SCS 188 in cherry

SUBWOOFER				
Low Frequency Cut-off	35 Hz	40 Hz	35 Hz	35 Hz
High Frequency Cut-off	160 Hz	160 Hz	160 Hz	40 Hz - 160 Hz Variable
Built-in Power Amplifier (RMS)	100 Watts RMS	25 Watts x 5 + 60 Watts	100 Watts RMS	100 Watts RMS
Paper Cone Long Throw Driver	200 mm	165 mm	200 mm	200 mm
Dimensions (h x w x d)	410 x 280 x 376 mm	315 x 300 x 310 mm	410 x 280 x 376 mm	450 x 250 x 360 mm
Weight	12.7 kg	7.2 Kg	12.7 kg	13.6 kg
Available Colors	black - silvergray	silvergray	black - silvergray	beech/cherry - SCS 188 in cherry

ELECTRONICS		
<b>Audio Section</b>		
Power	5 x 50 W	
Surround Formats	DVD-Audio Dolby Digital/DTS 5.1 Dolby Pro Logic II	Dolby Digital DTS Dolby Pro Logic
Frequency Response @ 1W (-3 dB)	45Hz - 20 kHz	55Hz - 20 kHz
Signal-to-Noise Ratio (IHF-A)	90 dB	80 dB
<b>DVD Section</b>		
Signal System	NTSC/PAL	
Audio Frequency Response DVD AUDIO	10Hz - 96 kHz (±0.5 dB, 192 kHz)	
Audio Frequency Response DVD	10Hz - 22 kHz (±0.5 dB, PCM)	
Audio Frequency Response CD	10Hz - 20 kHz (±0.5 dB)	
Signal-to-Noise Ratio	>90 dB	
Total Harmonic Distortion	>0.1%	
Dynamic Range: DVD AUDIO	>110 dB	
Dynamic Range: DVD (PCM)	>105 dB	
Dynamic Range: CD	>96 dB	
<b>General</b>		
Power Requirement	230V/50-60 Hz	230V/50-60 Hz
Power Consumption (Watts)	100	80
Dimensions (h x w x d)	70 x 440 x 345 mm	
Weight	5.3 Kg	

JBL is a registered trademark and Simply Cinema is a trademark of JBL Incorporated. Synthesis is a registered trademark of JBL, Incorporated. THX is a registered trademark of Lucasfilm Ltd. Dolby, MLP Lossless, Dolby Digital and Dolby Pro Logic are trademarks of Dolby Laboratories Inc. All rights reserved. DTS is a trademark of Digital Theater Systems Inc. Microsoft, Windows and WMA are either registered trademarks or trademarks of Microsoft Corporation in the United States and/or other countries. JBL continually strives to update and improve existing products, as well as create new ones. The specifications and construction details in this and related JBL publications are therefore subject to change without prior notice.

[www.JBL.com](http://www.JBL.com)

JBL Incorporated  
8500 Balboa Boulevard  
Northridge California 91329  
USA

JBL Consumer Products  
2 Route de Tours  
72500 Château du Loir  
FRANCE

PRO SOUND COMES HOME™

 A Harman International Company

